



# Daily Technical Trader - Qatar

July 08, 2026



### QE Index Summary

	07 July 2026	06 July 2026	Chg
Index	10,255	10,267	-0.1%
Value QR (mn)	325	293	10.9%
Trades	20,724	16,713	24.0%
Volume (mn)	100	111	-9.9%
Stocks Traded	53	53	0.0%
Gainers	17	23	-26.1%
Losers	33	24	37.5%
Unchanged	3	6	-50.0%

Source: Qatar Stock Exchange

### Weekly Market Recommendations:

Time Frame	Trend	Current Level	Target	Support	Resistance
Short-term (05Jul -09Jul)	↓	10,254.60	10,110	10,100	10,500
Medium-term (01Jul- 31Jul)	→	10,254.60	10,000	10,000	10,850

### Weekly Company Recommendations:

Company Name	Current Price	View	Time Frame	Support	Resistance
IGRD	QR4.420	Positive	Short-term (05Jul -09Jul)	QR4.326	QR4.575
QGRI	QR1.799	Positive	Medium-term (01Jul- 31Jul)	QR1.460	QR2.227

### Daily Company Recommendations:

Company Name	Current Price	View	Time Frame	Support	Resistance
AKHI	QR3.080	Positive	1 Day	QR3.057	QR3.110
DBIS	QR1.402	Positive	1 Day	QR1.386	QR1.421
DUBK	QR3.388	Positive	1 Day	QR3.369	QR3.416
MCGS	QR5.997	Positive	1 Day	QR5.944	QR6.058

### List of Stocks Close to Technical Levels

#### Companies Closest to Resistance

Company	Ticker	Mcap (QRmn)	Price	Resistance
Mesaieed Petrochemical Holding	MPHC	14,585.8	1.161	1.167
Baladna	BLDN	2,855.8	1.332	1.341
Qatar Navigation	QNNS	11,475.3	10.10	10.11
Ezdan Holding Group	ERES	22,891.0	0.863	0.873
AlRayan Bank	MARK	18,879.0	2.030	2.041

#### Companies Closest to Support

Company	Ticker	Mcap (QRmn)	Price	Support
Ezdan Holding Group	ERES	22,891.0	0.863	0.860
Qatar Insurance Company	QATI	6,525.7	1.998	1.996
Baladna	BLDN	2,855.8	1.332	1.327
AlRayan Bank	MARK	18,879.0	2.030	2.025
Barwa Real Estate Company	BRES	9,171.7	2.357	2.352

#### Companies with RSI over 70 (Overbought)

Company	Ticker	Mcap (QRmn)	Price	RSI
Lesha Bank	QFBQ	3,280.5	2.929	78.60
Qatar General Insurance & Reinsurance Co	QGRI	1,683.6	1.924	76.87
Estithmar Holding	IGRD	19,676.3	4.379	67.50
National Leasing	NLCS	365.7	0.739	67.39
Dlala Brokerage & Investments Holding Co	DBIS	266.9	1.402	61.89

#### Companies with RSI below 30 (Oversold)

Company	Ticker	Mcap (QRmn)	Price	RSI
Zad Holding Co	ZHCD	3,834.2	13.34	25.75
Al Mahhar	MHAR	443.0	2.140	35.13
Doha Insurance Co	DOHI	1,411.5	2.823	35.68
Industries Qatar	IQCD	67,034.0	11.08	36.07
Qatar Insurance Co	QATI	6,525.7	1.998	37.80

Source: Refinitiv, QNBFS Research

### Outlook

The QE Index lost around 13 points on Tuesday. The RSI line is trying to climb up towards the 50 level. Key support is now seen near 10,100, while resistance is expected around 10,500.

**QE Index- Technical Charts**



Source: Bloomberg, QNBFS Research



Source: Bloomberg, QNBFS Research



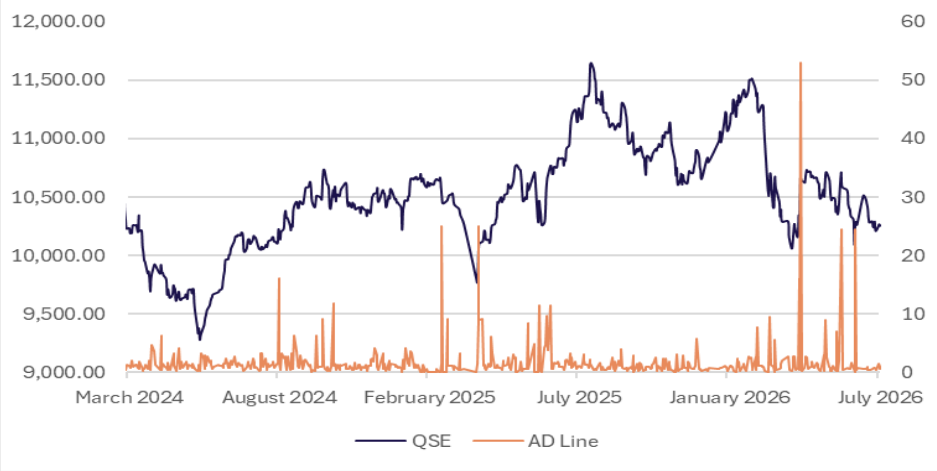
Source: Bloomberg, QNBFS Research

The QE Index failed to make any further headway towards 10,300 and slid lower on the back of profit-booking. Meanwhile, the Index has been moving lower over the past few days and is witnessing downside pressure. The Index needs to cross and sustain above 10,295, to rebound further towards 10,350. However, any failure to surpass 10,295, can result in consolidation. On the downside, the Index has immediate support remains near the 10,215 level.

The QE Index slid lower for the second consecutive week on the back of profit-booking. Meanwhile, the Index has been struggling to cross its 100-WMA currently near 10,655 and 200-WMA currently near 10,615 over the past few weeks. The Index needs to sustain above 10,350, to witness a rebound towards its 200-WMA. Overall current trend remains on the downside, and the Index can possibly move lower towards 10,100, wherein a reversal is expected. However, below 10,100, further profit-booking can test the 9,950 level.

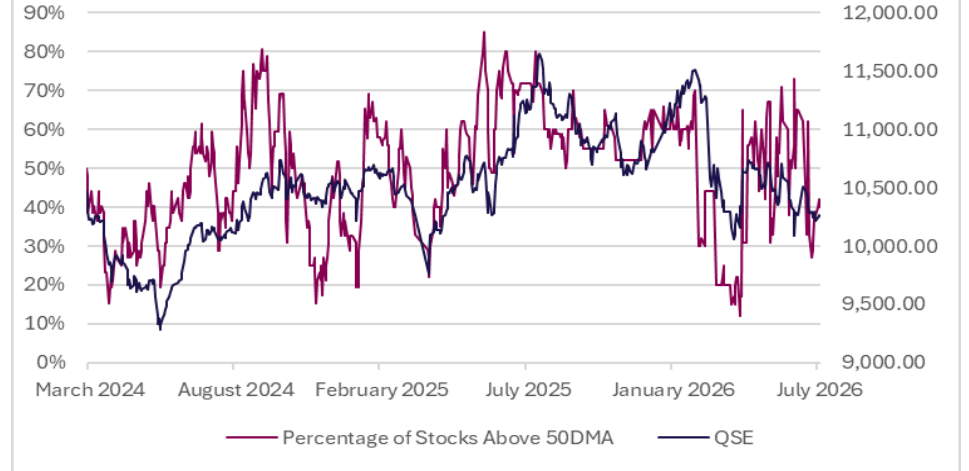
The QE Index moved lower on the back of profit-booking, after attempting a rebound in the past two months. Moreover, the Index breached below its important support of its 100-MWA currently near 10,570, indicating caution. However, the Index managed to stay above its 200-MWA currently near 10,090 and the lower end of the channel trendline, keeping its bounce back hopes alive. Meanwhile, acceptance above its 100-MWA, is required to test 10,760. On the downside, breach below its 200-MWA, can pull it down to test 9,800.

### Advance/Decline Line



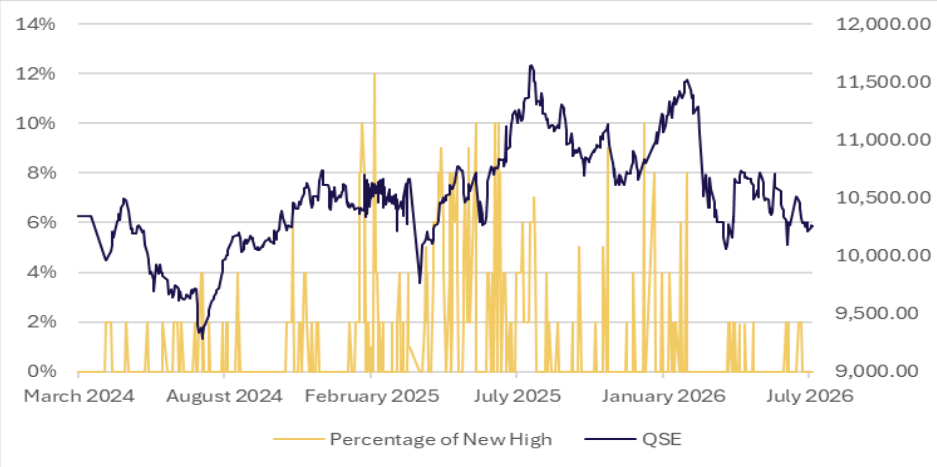
Source: Refinitiv, QNBFS Research

### Percentage of Stocks Above 50-day Moving Average



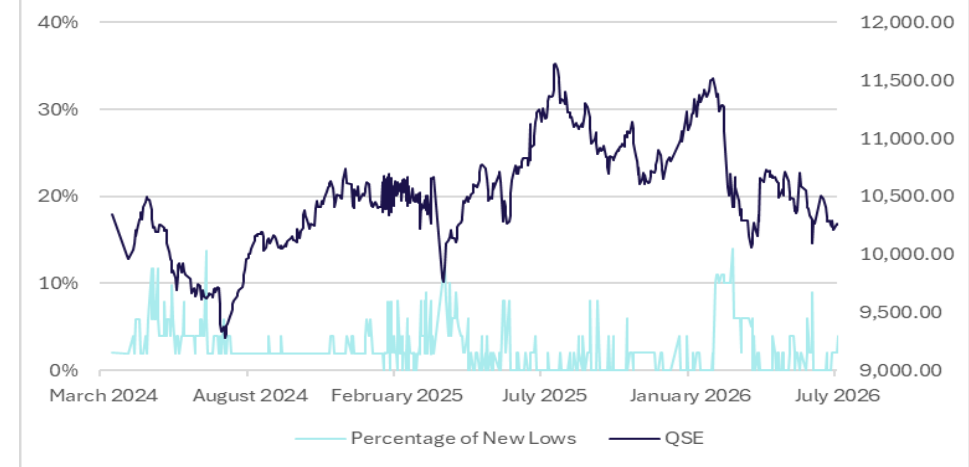
Source: Refinitiv, QNBFS Research

### Percentage of New Highs to Total Market



Source: Refinitiv, QNBFS Research

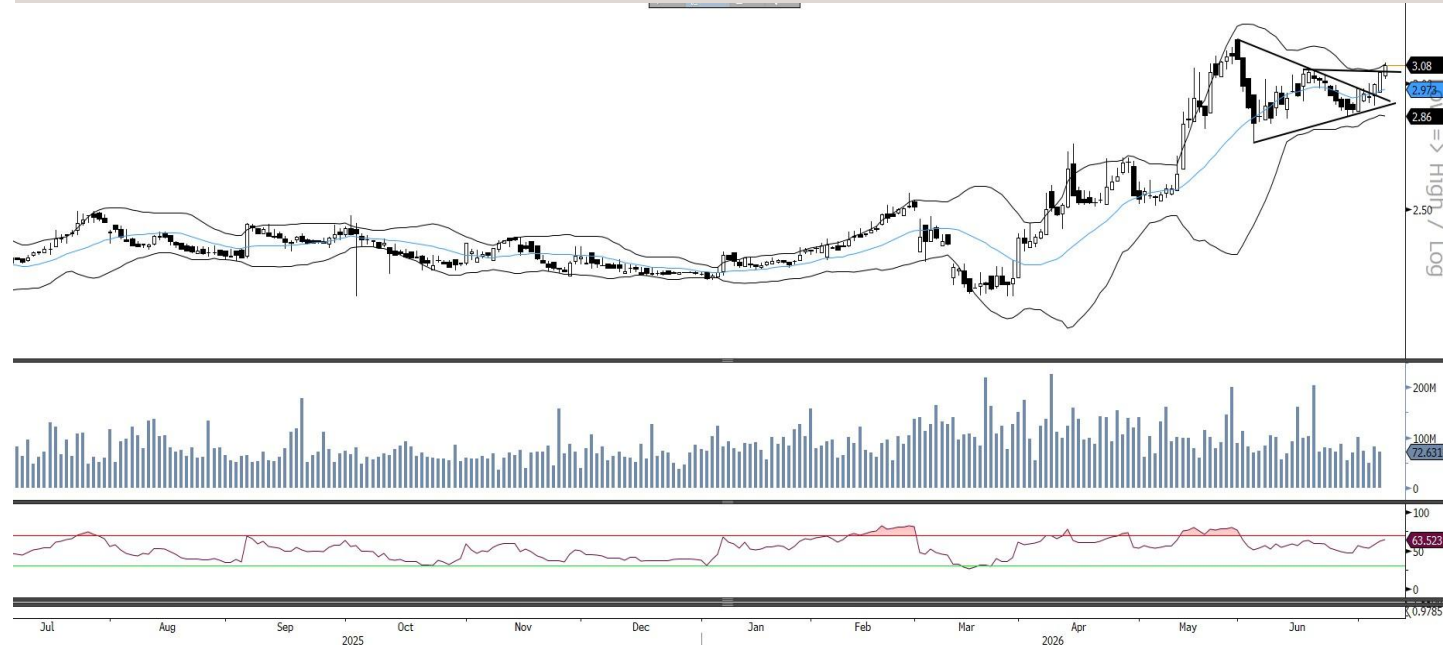
### Percentage of New Lows to Total Market



Source: Refinitiv, QNBFS Research

### Daily Company Recommendations

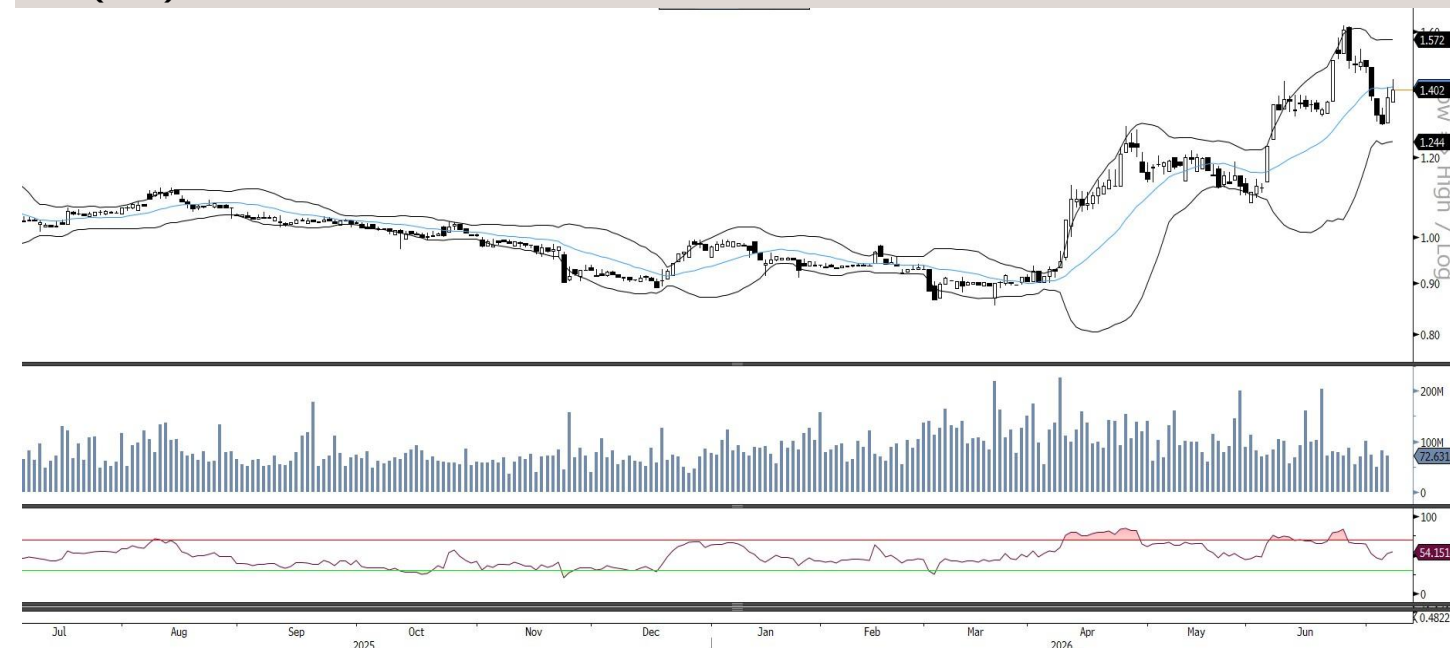
#### AKHI (Alkhaleej Takaful)



AKHI has been moving higher since breaching its symmetrical triangle trendline earlier and closed above the horizontal line of consolidation, showing signs of a further upside. The RSI line is in buy zone. Traders can initiate buy positions above QR3.090, for a target of QR3.110, with a stop loss at QR3.057.

Source: Bloomberg, QNBFS Research

#### DBIS (Dlala)

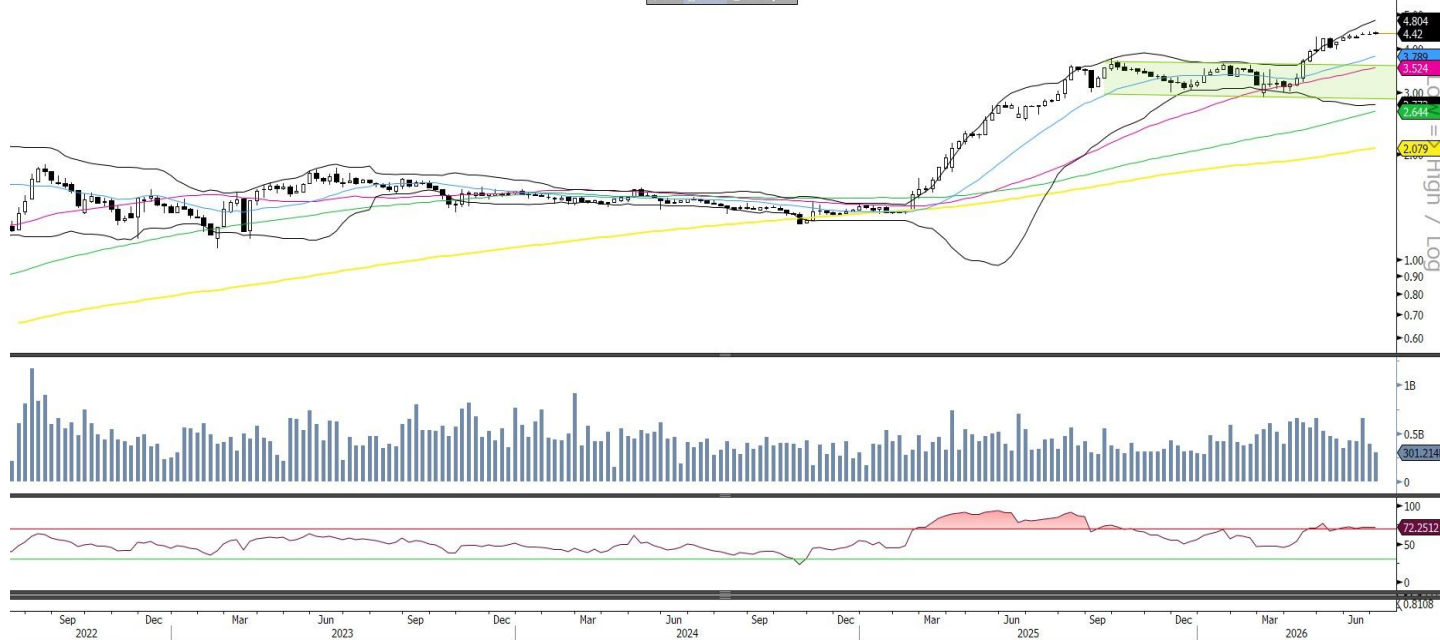


DBIS extended its gains and closed near the mid-bollinger band, indicating the rebound can continue. The RSI line is in the bullish zone. Traders can hold onto their existing positions or add fresh positions above QR1.409, for a revised target of QR1.421, with a new stop loss QR1.386.

Source: Bloomberg, QNBFS Research

**Weekly Company Recommendations**

**IGRD (Estithmar Holding)**



On the weekly charts, IGRD after witnessing a strong upside earlier has been in a consolidation mode over the past few weeks, however, the stock is gearing up for the next leg of rally. All the moving averages are pointing higher, indicating strength. The weekly RSI is showing strength. Traders can initiate buy only above the breakout range above QR4.470, for a target of QR4.575, with a stop loss at QR4.326.

Source: Bloomberg, QNBFS Research

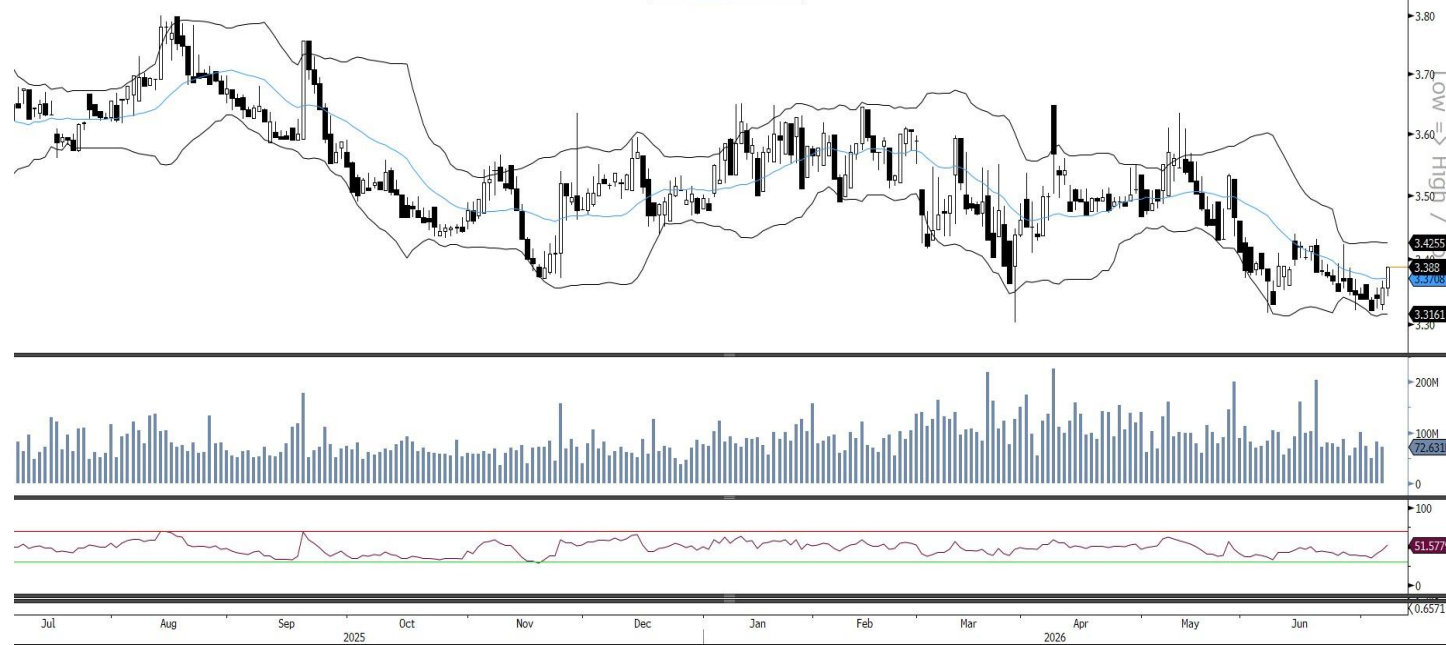
**QGRI (General Insurance)**



On the monthly charts, QGRI has been moving in the rising channel trendline zone over the past few months and is on the verge of a breakout. The stock has been consolidating in a range and now seems ready for a possible higher move. The RSI line supports this bullish sentiment. Investors can consider buying the stock only above QR1.880 for a breakout confirmation, with a stop loss of QR1.460, for a potential target of QR2.227.

Source: Bloomberg, QNBFS Research

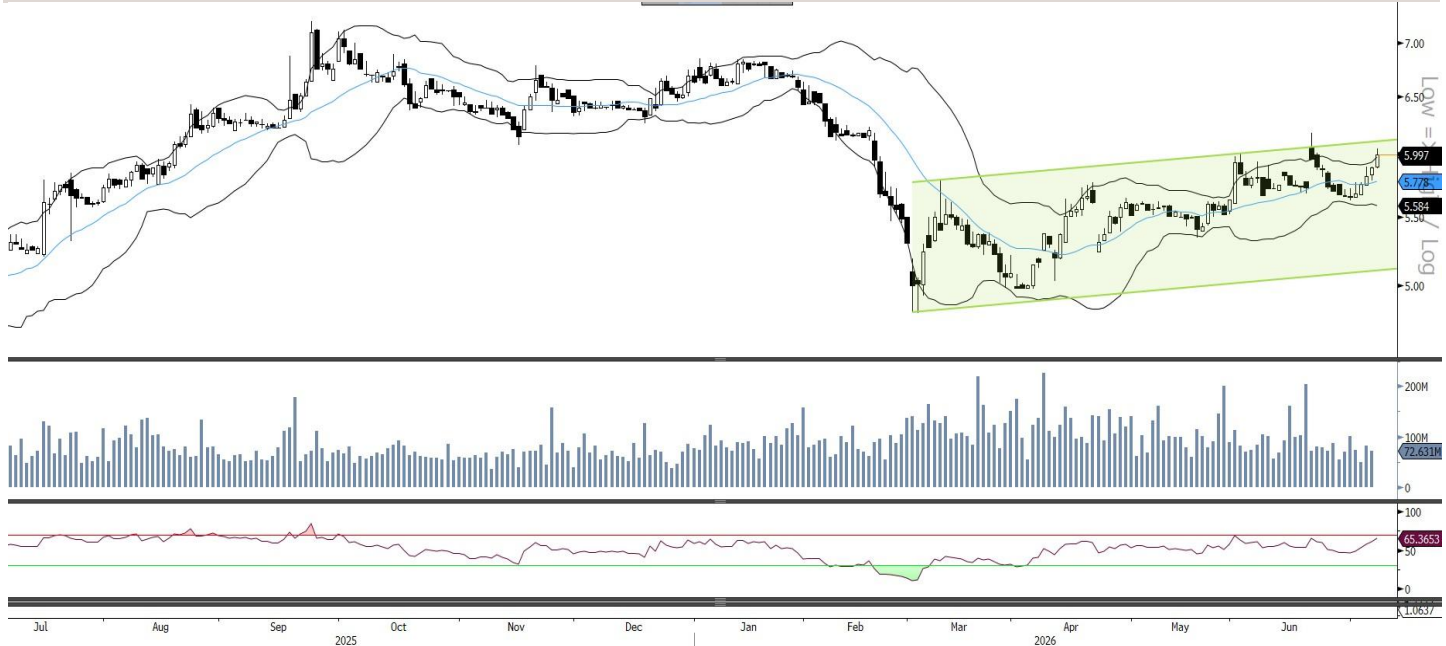
**DUBK (Dukhan Bank) - Short Term**



DUBK after witnessing correction over the past few days, reversed and closed above the mid-bollinger band with a bullish candle, showing signs of the bounce back may continue. The RSI line is above the 50 zone. Traders can initiate buy only above QR3.394, for a target of QR3.416, with a stop loss at QR3.369.

Source: Bloomberg, QNBFS Research

**MCGS (Medicare)- Medium Term**



MCGS gained further and closed above the upper end of the bollinger band, indicating signs of the pullback on the upside to continue. The RSI line supports this bullish sentiment. Traders can hold on to their existing positions, for a revised target of QR6.058, with a new stop loss at QR5.944.

Source: Bloomberg, QNBFS Research

## Contacts

### **QNB Financial Services Co. W.L.L.**

Contact Center: (+974)4476 6666

[info@qnbfs.com.qa](mailto:info@qnbfs.com.qa)

Doha, Qatar

### **Shahan Keushgerian**

Senior Research Analyst

[shahan.keushgerian@qnbfs.com.qa](mailto:shahan.keushgerian@qnbfs.com.qa)

### **Saugata Sarkar, CFA, CAIA**

Head of Research

[saugata.sarkar@qnbfs.com.qa](mailto:saugata.sarkar@qnbfs.com.qa)

### **Phibion Makuwerere, CFA**

Senior Research Analyst

[phibion.makuwerere@qnbfs.com.qa](mailto:phibion.makuwerere@qnbfs.com.qa)

### **Dana Saif Al Sowaidi**

Research Analyst

[dana.alsowaidi@qnbfs.com.qa](mailto:dana.alsowaidi@qnbfs.com.qa)

Disclaimer and Copyright Notice: This publication has been prepared by QNB Financial Services Co. W.L.L. ("QNBFS") a wholly-owned subsidiary of Qatar National Bank (Q.P.S.C.). QNBFS is regulated by the Qatar Financial Markets Authority and the Qatar Exchange. Qatar National Bank (Q.P.S.C.) is regulated by the Qatar Central Bank. This publication expresses the views and opinions of QNBFS at a given time only. It is not an offer, promotion or recommendation to buy or sell securities or other investments, nor is it intended to constitute legal, tax, accounting, or financial advice. QNBFS accepts no liability whatsoever for any direct or indirect losses arising from use of this report. Any investment decision should depend on the individual circumstances of the investor and be based on specifically engaged investment advice. We therefore strongly advise potential investors to seek independent professional advice before making any investment decision. Although the information in this report has been obtained from sources that QNBFS believes to be reliable, we have not independently verified such information and it may not be accurate or complete. QNBFS does not make any representations or warranties as to the accuracy and completeness of the information it may contain, and declines any liability in that respect. For reports dealing with Technical Analysis, expressed opinions and/or recommendations may be different or contrary to the opinions/recommendations of QNBFS Fundamental Research as a result of depending solely on the historical technical data (price and volume). QNBFS reserves the right to amend the views and opinions expressed in this publication at any time. It may also express viewpoints or make investment decisions that differ significantly from, or even contradict, the views and opinions included in this report. This report may not be reproduced in whole or in part without permission from QNBFS.